

Selattyn and Gobowen Parish

Annual Meeting of the Parish 2023 - Reports

Contents

Outgoing Chairman's Report and Annual report from the Parish Council	2
Shropshire Council Report	3
Selattyn and Gobowen Local History Group	3
Gobowen Library	4
Derwen College.....	5
Gobowen Primary School.....	7
Selattyn C of E Primary School	8
Oswestry Station Building Trust – Gobowen Station Improvement project update. .	11
Gobowen WI	11
Oswestry Ladies Choir	12
Old Oswestry Hillfort.....	13
Gobowen Community Group.....	20
Friends of Parkies (Parkinson's Support group).....	21
Gobowen Ladies Guild	22
Selattyn & Gobowen Parish Paths Partnership	22
Parkinson's in the Marches	23
THE ST MARY'S CHURCH, SELATTYN – BURIAL GROUND.	23
BRYN Y CASTELL COPPICE CONSERVATION GROUP	24
2022 Annual Parish Meeting report.....	25

Selattyn and Gobowen Parish

Annual Meeting of the Parish 2023 - Reports

Outgoing Chairman's Report and Annual report from the Parish Council

As Chairman of the Parish Council for the last 2 years I just wanted to welcome you this evening and thank you for coming to join us here tonight. Please accept my apologies for not being able to join with you this evening but I know Erica and the rest of the Councillors will do a great job in my absence.

It would also be remiss of me not to mention that we meet at least once a month and its always nice to see and hear from residents to ensure we implement things that you would like to see. For those of you who may be interested in getting involved a little more, we also have 2 Councillor vacancies, tonight is a great chance to speak to Councillors to understand what the role entails if you are interested.

Over the last 12 months we've continued to invest funds to make several improvements to facilities within the Parish:

- The 'Elizabeth Garden' new garden of remembrance area
- Continued LED upgrade and concrete column replacement
- Improved CCTV coverage of Pavilion and playing field
- New main door and improved external lighting at the Pavilion
- Relocated defibrillator for better coverage across the village.

We've also looked to enhance the Parish with new projects which look to provide an immediate benefit such as:

- 4 new litter bins
- Funding for Jubilee and coronation events and Xmas trees.

We've also continued to look forward and we have several future projects in development such as:

- Bus Shelter
- River Perry bank engineering works
- New noticeboard at Hengoed Cemetery
- Pavilion refurbishment & redecoration works

Supporting the Community is something I feel we're getting better at as a Parish Council, in Gobowen the return large scale events such as the Bonfire Night has really helped to bring the community together, thanks to the volunteers at Gobowen Community Group for the hard work they do. We've also supported locally by:

- Awarding 16 grants totalling over £6500 at March 2023 meeting
- Books of condolence following the death of HM Queen Elizabeth II
- Sharing information from local agencies through website and facebook page.

Selattyn and Gobowen Parish

Annual Meeting of the Parish 2023 - Reports

- Feeding into Shropshire Council consultations – e.g. Local Cycling & Walking Infrastructure Programme.
- Providing community feedback into other agencies – e.g. Airband, Star Housing, Shropshire Highways.

Councillors have continued to 'get things done' in the community, so thank you go to the councillors who dedicate their free time to support over Parish. Without them, the Parish just wouldn't be the same, things like:

- Organising litter picking equipment and waste bins for Selattyn
- Painting benches in Gobowen
- Watering and looking after floral displays in planters in Gobowen
- Snowdrop plating at Hengoes
- Putting up lamppost poppies
- Delivering Parish Roundabout
- Setting up community speedwatch

Finally, we the Parish wouldn't be what it is without the hardwork of all the volunteers who support us so a big thanks to those who help by:

- Regularly checking the defibrillators in Hengoes and Selattyn.
- Delivering Parish Roundabouts
- Watering and look after planters in Selattyn
- Litter picking across the parish
- Projects such as snowdrop planting
- Repairing allotment shed

Hope you all have a great evening, hope to see you soon

Craig

Shropshire Council Report

Shropshire Councillor Mark Jones gave a verbal report covering the following topic areas:

- Potholes are an extensive and expensive problem across the County
- 86% of Shropshire Council's budget is spent on adult and child social care
- Foster care fortnight was in progress, highlighting the way in which people can get involved in providing foster care.

Selattyn and Gobowen Local History Group

Our small group meet every couple of months, and in our first year have focused on existing local history records, of which there are a surprising number. The late Jack Tamlyn collected many documents – photos, articles, cuttings and statements from local people. A file with his collection is held in Gobowen Library. There is also the

Selattyn and Gobowen Parish

Annual Meeting of the Parish 2023 - Reports

work of Betty Shaw who has produced two well illustrated volumes of fascinating information on houses around Daywell and Hengoed, as well as a history of St. Mary's Church Selattyn.

We have also made contact with the Oswestry Family and Local History Group who are based in Oswestry Library. They have good records and access to good technology, and are keen to work with other local history groups. Their experience will be invaluable.

Some topics are well covered already, Old Oswestry for example; we mustn't forget that this site of national importance is wholly within our parish. Railway history is also comprehensive. There are also a surprising number of photographs, but more would be welcome.

In the next year we intend to focus on the knowledge held by local people. We already have a list of those we need to listen to, but more suggestions and offers to share local knowledge would be welcome. The local farming community will have valuable information on the area.

One of our aims is to produce a short popular history of the Parish suitable for general circulation. Hopefully by next year, we will have made progress with this, and may then be approaching the Parish Council with a request for help towards the cost of such a publication.

Roger Foreman

Gobowen Library

Over the last twelve months, Gobowen Library has seen a return to active use by members of the local community. All aspects of service have seen an increase, including visits, computer use, enquiries and attendance at events. The book stock has been completely overhauled and new promotional features have led to an increase in book loans. Most notably, staff members have been keen to address the Cost of Living crisis in the following practical ways:

- Launch of the 'Happy Thursdays' weekly drop-in sessions at the library, offering a free hot drink, biscuits and chat in a warm space. Attendance ranges between 8 and 12 adults per session, with children coming along occasionally too
- A 'Games & Hot Chocolate' day in the February half-term, when 16 children, young people and adults relaxed in the warm library, enjoying a range of games accompanied by a free hot chocolate and biscuits
- A free Easter treasure hunt for local families, generously sponsored by Stan's Superstore with the prize of a £25 gift voucher for one lucky winner and a

Selattyn and Gobowen Parish

Annual Meeting of the Parish 2023 - Reports

small chocolate prize sponsored by the Friends of Gobowen Library for each participant

Staff would like to thank the Parish Council Clerk for support with the promotion of library activities, whether through inclusion in the Roundabout, posters on the community noticeboard or highlighting on social media.



Happy Thursdays!

Cosy space
Free hot drink & biscuits
Chat or chill out...

Drop in at Gobowen Library
11am to 1pm
Every week from 13 October

Shropshire Libraries
Learn imagine discover

For more information call
01691 -653388
gobowen.library@shropshire.gov.uk

Derwen College

We are a charity and a specialist further education college, and proud to be located in Gobowen since 1927. Our main site, for day and residential students, is here, and we also have two smaller satellite sites for day students at Telford and Walford, near Baschurch. We've won lots of awards for the quality of our education in recent years. In 2022 we became one of the small number of organisations honoured with the Queen's Award for Enterprise.

The College provides vocational and independence training for 16 to 25-year-olds with Special Educational Needs and Disabilities or SEND, who come to us from Shropshire, Wales, and across the country. Around 90 of them live on site during term time. As part of our charitable objectives, we also offer accommodation to a number of older people with SEND, who call themselves clients. Clients are very much part of the local community and are often out and about in the village and in town.

Our slogan is 'a place of possibility' – and we really believe in this. Our young people learn so much during College course, including work skills that enable many to go on to paid or voluntary employment that they might not otherwise have been able to achieve.

In the same way, a large part of what we do is teaching our students life skills to help them live a more independent life after college. These skills include things like using

Selattyn and Gobowen Parish

Annual Meeting of the Parish 2023 - Reports

public transport, food shopping and cooking, online and personal safety, personal care and general housekeeping.

The majority of our students follow vocational pathways in Horticulture, Performing Arts, Hospitality and Food, Retail and Enterprise, Business Support and Enterprise or Sports and Fitness.

Many students work in our onsite 'Marketplace' in Gobowen, where they learn through serving the public in our garden centre and shop, café, restaurant, charity shop and a small training hotel. We welcome all members of the public to come and use these great outlets – please do come along and support us and our young people.

As students develop their skills, they start to go out on work experience placements with local businesses. We are always keen to hear from anyone who can offer them this invaluable experience. Employer partners range from national chains like Premier Inn (we have our own hotel), to smaller local businesses like The Old Schoolhouse restaurant in Oswestry – and lots in between! Our Horticulture students create and supply the hanging baskets that adorn the streets of Oswestry and Llangollen amongst others, and they have grown and planted the wonderful flowerbeds in Cae Glas park in Oswestry in recent years. We hope you have enjoyed them.

As part of College life, our students enjoy a huge range of activities – you may have seen them out in the community. Our Performing Arts groups have starred at the Holroyd Theatre, Moreton Hall, and at the Eisteddfod, amongst lots of other venues – they're invited all over to perform.

Our reputation for Performing Arts has grown over recent years and we have attracted support including from celebrities such as Sam Retford from Coronation Street. We are currently the filming location for a drama series called Henry House. Look out for us on TV soon – we've also featured in Antiques Roadtrip (not Roadshow!) – the programme is due to be aired later this year.

Lots of people are surprised to learn just how many of our students achieve Duke of Edinburgh's Awards, including up to Gold. Derwen students are no strangers to visiting Buckingham Palace to receive their awards! We have created our own DofE outdoor centre at the Gobowen campus which we hope to make available to young people across Shropshire.

You may notice that we pop up in the local press quite often – this is really important to us as we are very keen to connect with the local community to ensure that our students get the best experience possible. Local support is invaluable to the work we do. This includes people visiting the Gobowen Marketplace for a cup of tea and a cake, or to browse in our charity shop, The Vintage Advantage and the garden

Selattyn and Gobowen Parish

Annual Meeting of the Parish 2023 - Reports

centre – all this gives our students real-life work experience as part of their College course. Support also includes employer partners providing work experience to students, and sometimes even jobs after college. Other local support is from our growing group of volunteers. These include local companies who visit for a day to carry out a particular project, such as clearing the Woodland Walk, to individuals who are in our bank of volunteers who help working in our outlets.

We're really proud to have been part of the Gobowen community for almost 100 years. Please do come and visit us at our Marketplace, or volunteer – we'd love to see you

Gobowen Primary School

The children have had lots to celebrate this year. They continue to work hard in all lessons and speak positively about their learning. One area the school has focused on this academic year is children's speech and language skills. The children have been taking part in live debates across the school. These debates have taken place in front of over 100 children and several adults. There has been a positive impact on learning because of debate. It is also helping children with their writing as well as developing their confidence when speaking aloud. Moreover, the school has provided support and training to other Shropshire schools. We also have a school visiting from Preston to observe a live debate and learn how to implement debate as part of their curriculum.

The school have also met the standard for UNICEF UK's Rights Respecting School Award at the Gold level. This is the highest level that can be achieved, and Gobowen Primary is the only school in Shropshire to achieve this award. We are very proud of this. The report is available to read on our school website. There were many strengths of the school identified in the report and I have copied and pasted a couple from the report.

'Children who confidently discussed a range of rights and why they are important and relevant to their lives'.

'A nurturing family atmosphere with strong relationships with parents / carers who also value the school's rights respecting work'.

It takes a lot of work to achieve the gold level award and the inspection is a very rigorous process from start to finish. I am most pleased for all the children who discussed their rights with the inspector with respect and confidence.

Earlier in the year the children performed a nativity and sang Christmas carols at All Saints Church. Their performance for the nativity and the singing of carols was excellent. Our parents really enjoyed both events. Our choir also performed beautifully at the turning on of the Christmas lights.

Selattyn and Gobowen Parish

Annual Meeting of the Parish 2023 - Reports

Our parent lesson lunches have started again, and they are very popular with parents. Many sign up to come into a lesson with their child and then stay for lunch. It's always nice to have parents in school to see how well their child is working

All our after-school clubs continue to be free of charge and many children sign up to a club at the school. In the summer the school will be hosting a large musical event for parents called 'Gobowen Rocks' which will involve the whole school.

Additionally, over the summer holidays the main school building will have all its windows replaced. The school is also exploring the idea of converting the outdoor sheds on the school playground into a school library. I am currently in conversations with the Local Authority about this.

Our biggest challenge this year at times has been school attendance. This is because there has been a lot of sickness not just in this school but across many schools in Shropshire. Thank you for taking the time to listen/read this report and I hope everyone is well.

Kindest regards, Mr. Walsh

Selattyn C of E Primary School

Selattyn C.E. Primary School is a school we can be proud of. The school is a vibrant, positive place to be. Our children become responsible citizens. They enjoy coming to school and are motivated by their success. They feel secure and safe in school and know that all staff and stakeholders have the welfare and education of each child as their focus. We are truly inclusive and prioritise the development of self-confidence and self-esteem, spiritual, moral, cultural and social development, alongside academic progress. Staff recognise the importance of individual learning journeys and each child's progress is developed according to their needs.

Pupils throughout the school enjoy a broad, balanced and creative curriculum and enjoy working in their mixed aged settings.

We aim:

- To provide an inclusive Christian learning environment where every child feels happy, secure, valued and suitably challenged.
- To ensure children are aware of God's environment in which they live and learn.
- To maximise the potential of every individual with an acceptance and realisation that each child's abilities, capabilities, aptitudes and needs are different.
- To ensure equality of educational opportunity for all children and adults in the school.

Selattyn and Gobowen Parish

Annual Meeting of the Parish 2023 - Reports

- To promote the spiritual, moral, cultural, mental, social and physical development of every child within school.
- To promote a culture of high standards and expectations through all aspects of school life.
- To encourage independence and self-motivation and help children develop lively and enquiring minds.
- To model and nurture a culture of respect for each other and ourselves and give children the responsibility for their own behaviour.
- To promote enjoyment of and high standards and expectations in numeracy, literacy, sciences, humanities, physical activities and the arts.
- To foster links with the local and wider communities and explore the benefits of shared initiatives and expertise.
- To live and learn within the family atmosphere that lies at the heart of our small village school.

Our focus at present is on further developing the curriculum ensure it remains relevant and provides the children with high level learning opportunities in an ever changing world.

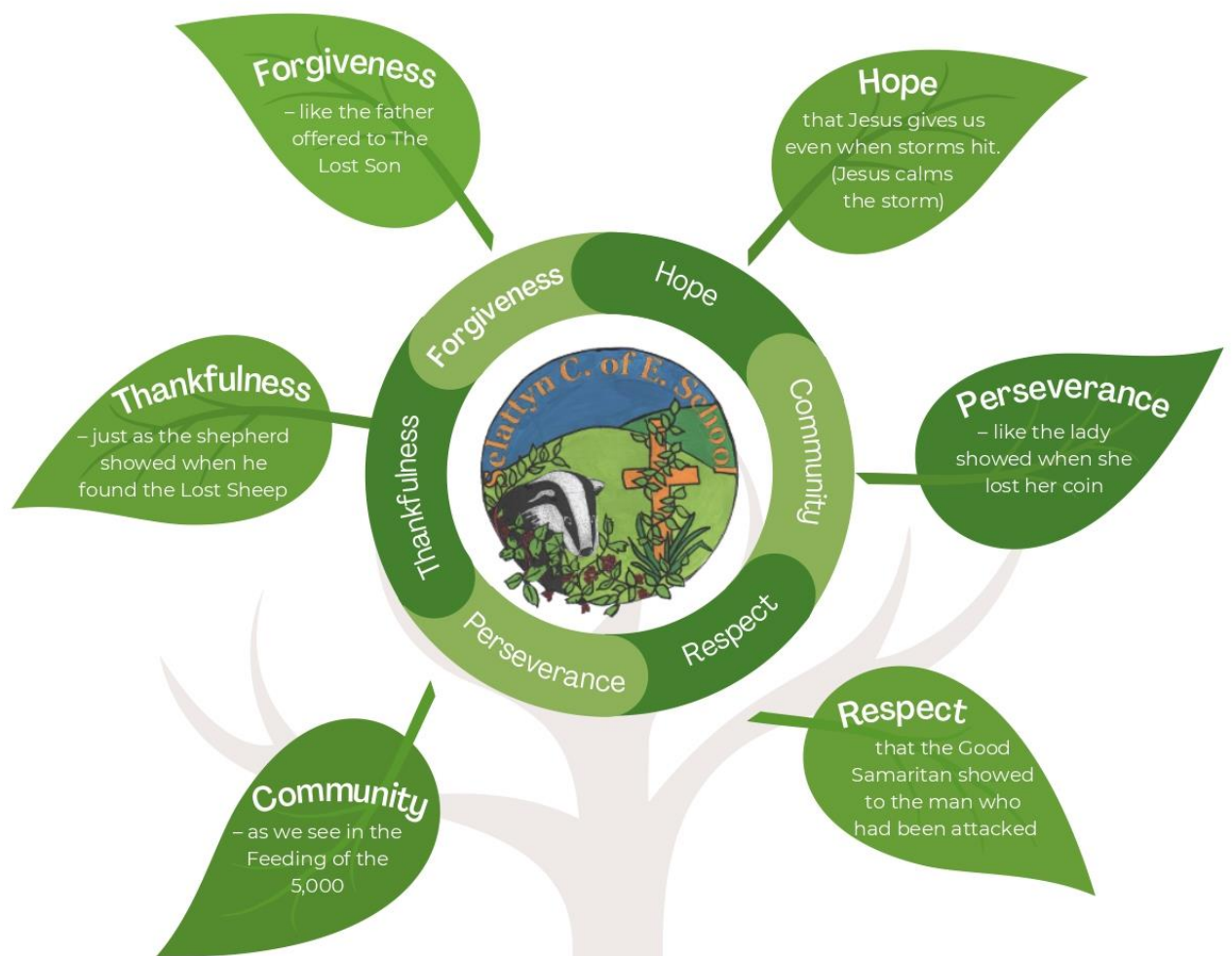
This includes:

- Working with local schools on sharing good practice.
- Providing training for staff.
- Involving the whole school in creating and implementing a new vision and values.
- Purchasing new resources to compliment learning both in and out of the class.
- Inviting different organisations into school to compliment learning and providing rich and stimulating learning experiences for all children.
- Investing in pupil voice by strengthening the school council, eco committee and introducing a new Worship Committee.
- Continuing to enhance the school building and grounds by carrying out regular maintenance and repairs.
- Offering after school clubs and sporting opportunities with other local schools.
- Providing a residential trip for learners.
- Working in partnership with the local community and organisations.
- Investing in I.T. equipment to provide further opportunities for children to develop their skills.
- Creating a new library and quiet space for group work.
- Ensuring all the children have the opportunities to develop their independence by working on a broad and balanced curriculum which is relevant for today.

Selattyn and Gobowen Parish
Annual Meeting of the Parish 2023 - Reports

Selattyn C of E Primary School
Small School, Big Heart

Vision and Values



Our Vision

As a loving community, our vision is to nurture each individual in our care, giving them the skills, resilience and hope to succeed and flourish, both academically and spiritually, in God's ever changing world.

Selattyn and Gobowen Parish

Annual Meeting of the Parish 2023 - Reports

Oswestry Station Building Trust – Gobowen Station Improvement project update.

The station buildings were secured in 2017 with financial assistance and support from Three Parishes Big Local and since that time we have undertaken extensive refurbishment and improvements to upgrade the interiors of both the main building on platform 2 and the booking office and buffet facility on platform 1.

Covid had intervened to delay our aspirations, however, much has since been achieved with the completion of the splendid period buffet and securing tenant occupation of the vacant offices.

However, the buildings remain under threat of greater damage until we have the funds to undertake extensive external repairs currently estimated at circa £300,000

Large pieces of the previous 1980's attempts at cement rendering are falling off allowing rainwater penetration into the fabric of the building.

There are extensive areas of broken roof slates, leaking gutters, decaying timbers and defective chimney stacks. The scaffolding for this work, close to the main railway line, must comply with Network Rail's onerous requirements.

We have made several unsuccessful funding applications to government levelling up schemes and are currently working on a new funding opportunity.

Our small group of volunteers leading the project would greatly benefit from further assistance and support from the local community and would invite anyone interested in joining us in delivering this rewarding community scheme to enquire at the Gobowen booking office.

Gobowen WI

Later this year Gobowen WI celebrates 95 years since it was founded. Originally meetings took place in the homes of the more wealthy ladies, although records show everyone was made to feel most welcome.

As numbers grew and when the All Saints Church hall was built meetings moved into the new venue and we still meet there on the first Tuesday of the month.

At one time there were over 50 members but as more organisations for women in particular were founded the WI numbers decreased.

This trend was throughout the UK and before COVID Gobowen was down to just 14 members.

Once we were allowed we slowly began meeting again, by zoom, then outside and finally back in the hall.

Selattyn and Gobowen Parish

Annual Meeting of the Parish 2023 - Reports

We are now in the fortunate position of having 20 members and most meetings are fully attended.

We have had a number of excellent speakers in the past year and look forward to another interesting programme.

We have recently celebrated the coronation with a bring and share supper, with ladies wearing red, white and blue. The speaker that night had worked with Lord Mountbatten, mentor to the king.

As part of Oswestry North group of WIs we continue to support the Derwen and also take turns to help with refreshments at Oswestry Show. There will be a group outing to Liverpool in July and we hold a large group meeting in September. This year it will be hosted by West Felton. We will also come together again at West Felton for the annual carol service.

Gobowen WI will I hope continue to be recognised as a friendly institute where all are welcome and trust this friendliness will go a long way to increasing our numbers in the next year.

Helen Cattell
President, Gobowen WI

Oswestry Ladies Choir

Six years ago a new group emerged from Oswestry Choral Society which had been in existence for 129 years. Sadly the Choral Society came to an end as the few remaining men retired. The first ladies choir in Oswestry was formed through the serious lack of male singers. We know where all the men are – in the fourteen or more Male Voice Choirs from Oswestry to Wrexham!

Oswestry Ladies Choir is a vibrant and versatile local choir that sings in many varied styles. The musical director Dawn Jaffray works hard to find new exciting music for the ladies to sing as well as adapting pieces for female voices. The repertoire has included music from Mozart to Musical Theatre and Pop classics and Jazz to Puccini Opera with music by Vivaldi, Handel, Faure and Delibes.

Notable performances include the first performance of “Missa Popularis” by the living Swedish composer Marten Jansson with whom the choir worked closely and became the first British female choir to perform this work apart from the choir that initially recorded the music for commercial purposes.

Other successful concerts range from Gilbert & Sullivan, Gershwin, Rogers and Hammerstein, Johann Strauss also more recent composers such as Bob Chilcott, John Rutter, Andrew K Arnesen and Marten Jansson.

The choir has sung “Songs from around the world” in different languages including Swahili, Spanish, Japanese and Swedish also Gospel music, blues, ballads and

Selattyn and Gobowen Parish

Annual Meeting of the Parish 2023 - Reports

Jazz. Every concert is designed to be different to provide variety and something new from the choral repertoire. The conductor's main aim is to bring the best of choral music to the public in Oswestry and also offer a platform to talented local and professional soloists. It has been a successful six years with music from Britain, France, America, Africa and Sweden truly reflecting and supporting music by foremost composers of the 20th and 21st centuries, writing music for us to sing in our time.

The choir holds two concerts a year. The Christmas Concert is an every changing programme of festive Carols and Songs while the summer concert is more light hearted eg "Songs around the World", "All that Jazz", and "Famous Love songs" by song writers of the 20th and 21st centuries. The choir also sings at funerals and weddings and joins forces with Montgomery Festival Chorus and Much Wenlock Choral Society.

Strong bonds of friendship are formed in this dedicated choir through the mutual love of singing. After two deprived years of singing, the choir bravely re-formed and happily sang with all windows and doors open!! Welcoming ladies of all ages, the choir is keen to recruit Sopranos and Altos. A love of singing and the joy of singing with a great group of people with a commitment to attend rehearsals every week and sing in two concerts a year is all that is required. There is no audition only a simple voice test after a few weeks to ensure new members are singing in the best place for their voice. As Ella Fitzgerald famously said "The only thing better than singing is more singing". The Ladies Choir meets every Wednesday evening, from 7pm to 9pm in All Saints Church Hall, Gobowen.

Our summer concert, the first after two years of enforced silence will be held on Sunday 26th June, 3pm at the Venue, Park Hall, Oswestry. It will be a vibrant toe-tapping jazz sound from "Nidaros Jazz Mass" and "Jazz songs of innocence" a jazzy setting of poems from William Blake's "Songs of Innocence". A trio of musicians will accompany the choir as well as the resident pianist and accompanist Elizabeth Dobson.

Old Oswestry Hillfort

OSWESTRY HERITAGE GATEWAY

Vision

Located between the Welsh Borderland hills and Shropshire Plain, the Oswestry Heritage Gateway links together archaeology, history, cultural landmarks, myths and legend in a dynamic story that can be explored by all ages and with access for all.



Selattyn and Gobowen Parish

Annual Meeting of the Parish 2023 - Reports

The Oswestry Heritage Gateway seeks to harness nationally important historical and cultural assets as a catalyst for new tourism and economic opportunities for the town and surrounding settlements. Numerous heritage landmarks and archaeological find-spots, including several forts and castles, as well as notable cultural, agricultural and environmental assets are woven through Oswestry's northern fringes.

The Oswestry Heritage Gateway provides a potent and marketable identity for an important yet overlooked hub of heritage tourism in north-west Shropshire. In enhancing tourism opportunities at this important County portal, it offers potential to reinforce the area's appeal as a visitor destination along the A5 tourist corridor, en route to the World Heritage Site (WHS) attractions at Chirk and onwards to North Wales. Far from being a standalone offer, it would explore fresh angles to engage visitors with the full heritage and tourism offer around Oswestry and neighbouring parishes.

Broadly, the Oswestry Heritage Gateway links together the ancestral seat of Lord Harlech (the grade II listed Brogyntyn Hall and registered parkland), the remarkable Iron Age hillfort of Old Oswestry (a scheduled monument), and co-located heritage assets: Thomas Telford's London to Holyhead road, the Cambrian Railway, the ancient market place at Oldport Farm, and medieval historic route to Whittington.

Oswestry is a long-established border settlement and market town lying on the boundary of England and Wales. The 9th century Wat's Dyke linear earthwork (a scheduled monument) tracks through the Oswestry Heritage Gateway, an important remnant of the historical power struggles at this strategic frontier.

Between Old Oswestry and Whittington Castle lies the area of Park Hall, formerly graced by one of the finest timber-frame Tudor mansions in Britain and later the base for a significant military training camp during WW1 and WW2. Son of Oswestry, the war poet Wilfred Owen, is believed to have penned the poem 'Storm' while stationed here before serving on the Western Front where he eventually met his untimely death.

The Oswestry Heritage Gateway embraces a multi-phase archaeological landscape and hinterlands of outstanding tourism and environmental value, as well as significant potential to provide recreational, sustainable transport and community benefits.

The strategic management of this history-steeped landscape and environmentally important resource would benefit the quality of life and economy of local communities for present and future generations.

Ultimately, the Oswestry Heritage Gateway group seeks to partner with stakeholders to further develop the account of one of Britain's most important hillforts, 'The

Selattyn and Gobowen Parish

Annual Meeting of the Parish 2023 - Reports

Stonehenge of the Iron Age', which lies at its hub, and foster the national and international recognition warranted by this heritage jewel.

The Gateway also aims to support neighbourhood strategies and projects that improve the tourism and heritage value of Oswestry's northern environs. These include the restoration of the Cambrian line and sustainable transport links offering safe mobility between the town and Gobowen, Whittington and Park Hall area; promotion of Oswestry's greenspace network through environmental initiatives within the Gateway; and the management of Old Oswestry's ecology in harmony with its heritage to help protect and grow wildlife populations, including species at risk.

Old Oswestry Hillfort 2022

Aims: To reopen Varley's Trench A roundhouse excavation (1940) to assess condition of preservation and retrieve any pottery not retained in 1940, and any unexcavated charcoal or hearth samples for C14 dating.

Results: An area 6 x 8m was laid out and deturfed over the depression in the ground where Varley's trench had been backfilled. As the edge of Varley's backfilled trench was not immediately apparent, within this general area several parts were selected for excavation to a greater depth than just topsoiling: NE corner, central zone and SE zone.

General depth of deposit below the topsoil was c.0.5m comprising a sandy matrix difficult to distinguish as backfill compared to the natural geological formation. However, finds of exploded ordnance and other metal debris showed that disturbance had occurred to this depth, even though an edge to identify Varley's trench from unexcavated material was not obvious.

The NE zone revealed the stone tail of the Period 3 rampart, with a line of kerbstones marking the rear (western edge) of the rampart. The kerbstones ceased c.1m south of the northern trench side, suggesting this was the edge of Varley's trench. Within the kerbstones, a particularly white stone was seen, which when turned over shows a crescent-shaped carving (this was named the moonstone by those on site). Oak and prunus species roundwood charcoal was found as well as small pieces of daub within the Matrix surrounding the rampart stones. The daub has been sent to Oxford RLAH, and the charcoal to York Archaeology for assessment.

The central zone revealed a trampled surface of yellow clay with some charcoal at c.0.5m depth, through this several postholes and a depression were found, and excavated. A double posthole (306 and 308) was excavated, filled with many stones and an infill deposit indistinguishable from the backfill of Varley's trench above. Charcoal including a concentrated deposit against the side of posthole 308 was found and bagged as bulk samples and have been sent to York Archaeology for assessment. The results show spelt and emmer wheat, as well as sedge and various

Selattyn and Gobowen Parish

Annual Meeting of the Parish 2023 - Reports

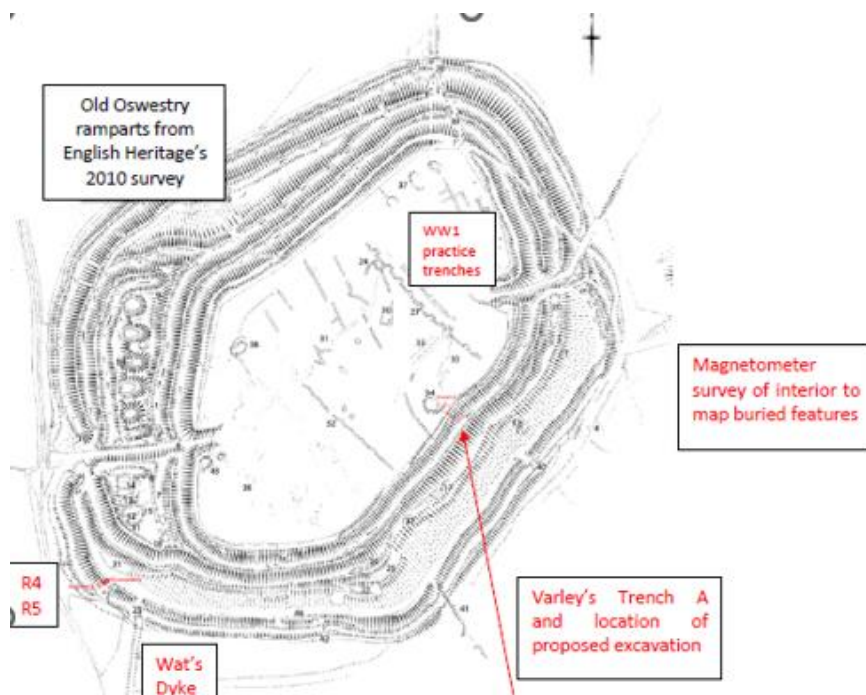
tree species. Charcoal samples were also retrieved from the trampled surface (303) and have been assessed by YA resulting in oat and weed species, as well as small roundwood/ twigs. All these samples are good for C14 dating. Possible sherd of VCP was also found in posthole (308) (tbc).

The SE zone produced more postholes at a similar depth to those in the central zone, and led into the disturbed area from Varley Trench A which investigated the rampart to the east.

Correspondence between the published plan for Varley's roundhouse and the keyhole investigations from 2022 are not exact, but we think we have a reasonable match.

Significance: The palaeoenvironmental results and potential C14 dating are very rewarding, as no previous evidence has been obtained from the hillfort. It compares well with assemblages from other hillforts that have been analysed in this way, and shows that preservation is good, with potential for much greater quantities and data available for study in the future. The "moonstone" is an exceptional find of semi-portable art, although it is likely out of context and reused when the rampart was enlarged during Period 3. Originally this block of limestone (tbc) might have formed part of a pillar or gatepost. The previous find of a horse torso carved in bas-relief at the western entrance to the hillfort makes the likelihood for the discovery of more artwork high.

Cameron Moffat (EH) has highlighted the relatively recent find of two bronze decorated rings from the hillfort which are currently in the EH store in Swindon. These may be chariot hub fittings (tbc).

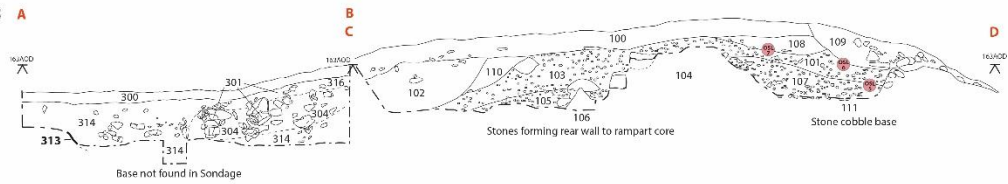


Selattyn and Gobowen Parish

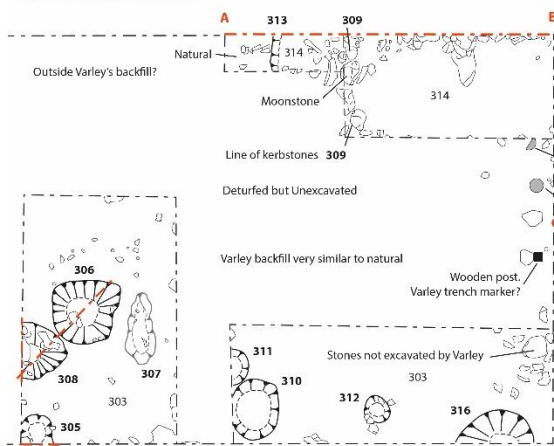
Annual Meeting of the Parish 2023 - Reports

Location plan and

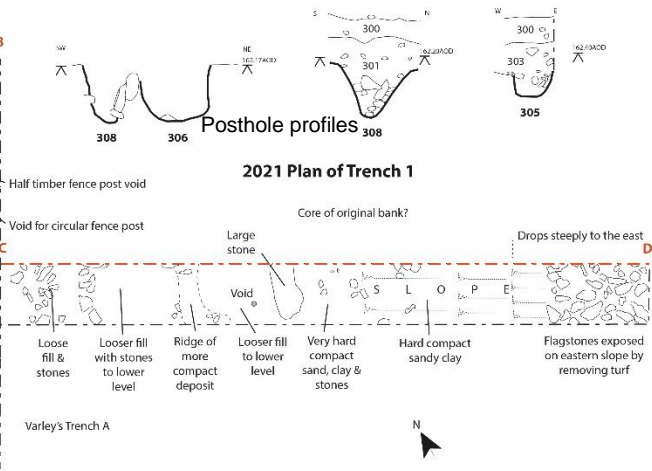
Rampart sections through Trenches 1 & 3



2022 Plan of Trench 3



2021 Plan of Trench 1



General view of Trench 3 in 2022 looking south-east

Selattyn and Gobowen Parish

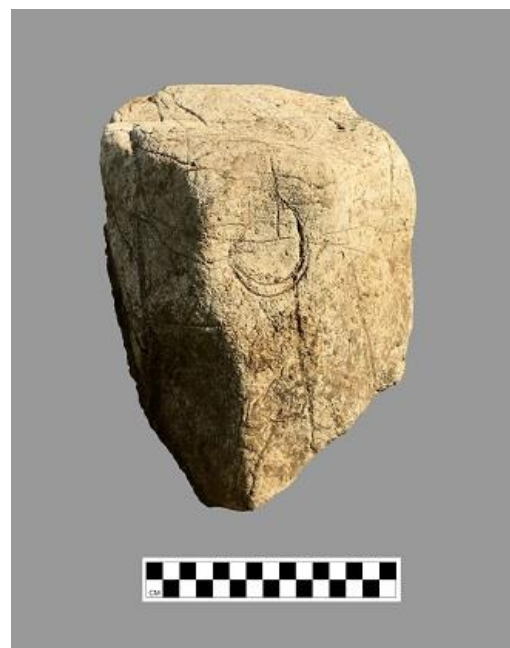
Annual Meeting of the Parish 2023 - Reports



2021 excavation of the lower rampart (R4) with Oldport cottage in the background



Excavating the large roundhouse postholes



The Oolitic limestone found in the rampart

Selattyn and Gobowen Parish

Annual Meeting of the Parish 2023 - Reports



Taking samples for Optically Stimulated Luminescence dating from the upper rampart (R1)

Selattyn and Gobowen Parish

Annual Meeting of the Parish 2023 - Reports

Gobowen Community Group

PAST EVENTS

2022 saw us form as a committee following the success of the Queen's Platinum Jubilee celebration. We were fortunate to receive grants to enable our setup and managed to complete 2 successful events in 2022.



Bonfire & Fireworks

We welcomed the Award Winning Bright Sparks Fireworks Display team to the first Bonfire Night in over 20 years in Gobowen. The weather wasn't great but we had over 3,000 people turn up to view an amazing display. Feedback from those who attended was really great and there are definitely things we need to tweak for 2023 but overall we were so pleased with how the event went.

Kids Christmas Party

Due to the success of the Bonfire Night we were able to offer a Free Christmas Party. The kids had a visit & gift from Santa, play some party games and generally just enjoy themselves. Thanks to Gobowen Working Men's Club for hosting free of charge.

Thanks

To the countless volunteers who have given time before, during and after the events we've held.

To the community for supporting our events, we put them on for you so let us know what you would like to see happening.

Contact Us



Gobowen Community Group



gobowencommunitygroup@gmail.com



07971 208054 - Craig (Chair)



07966 109336 - Sam (Secretary)

Selattyn and Gobowen Parish

Annual Meeting of the Parish 2023 - Reports

FUTURE EVENTS

Family Fun Day - Saturday 1st July 12-8pm

Free Entry - bring your chairs & picnic mats and join us for a day of live music, food, games & entertainment for all the family.



Bonfire & Fireworks - Sunday 29th October

Following the success of 2022 - we look forward to welcoming back the Award Winning Bright Sparks Fireworks Display team. We've had to pencil in slightly earlier for 2023 due to date restrictions but it gives us the opportunity to also have some Halloween fun at the same time.

Gobowen Panto - Mid December

Oh, Yes we Did! Join us at the Working Men's Club for several nights of Panto fun! Auditions/Rehearsals will be Mid Sep onwards. All ages, experience & abilities welcome. Further details will be released soon. Thanks to funding from Silo and Selattyn & Gobowen Parish Council.

Kids Christmas Party - Dec

Free Entry - It went so well last year that we're going to do it again. A visit from Santa and a chance to have a boogie to some Xmas tunes for the little ones in the community.

Xmas Wreath Making - Dec

We're hoping to host an event to allow a fun evening of Wreath Making in the village. Just working through details of cost, venue etc and will confirm asap via our FB page.

Contact Us

 Gobowen Community Group

 gobowencommunitygroup@gmail.com

 07971 208054 - Craig (Chair)

 07966 109336 - Sam (Secretary)

Selattyn and Gobowen Parish

Annual Meeting of the Parish 2023 - Reports

Friends of Parkies (Parkinson's Support group)

The group meetings, held at St Martins Village Hall, have continued to be well supported by the Parkinson's community, with numbers now increasing exponentially & averaging 40 at each month's session.

Speakers have included Optimum Movement seated Pilates, Positivity & meditation, an artist talking about his art before & after diagnosis of Parkinsons, & next month we have a Parkinson's nurse!

Meetings are held on the second Wednesday of the month at St Martins Village Centre, Overton Road, St Martins.

For more information:

www.friendsofparkies.com

Email: info@friendsofparkies.com, friendsofparkies22@gmail.com

Call: Elaine Payne 07760 685447 or Phil Bowen 07815 539995

Gobowen Ladies Guild

We are a group that was formed over 50 years ago. We meet every month on the second Thursday at 7:30pm in All Saints' Church Hall. We have various speakers and demonstrations each month, also refreshments, cake, tea or coffee and a chat.

We are a very friendly group and are always looking for new members to join us. We are having an AGM in September to decide on the future of the group.

For more information, please contact either Chris Davies or Ellen Roberts.

Selattyn & Gobowen Parish Paths Partnership

In its 6th year, the Parish Paths Partnership team has continued its maintenance and improvement work across the Parish on cross-country rights-of-way, public footpaths, byways and bridleways. Such activity has been carried out in response to the Shropshire Outdoor Partnerships' schedule of reported 'issues', from members of the public, from our own P3 observations and from Ramblers.

The team of volunteers has grown during the past year to eight active members, although sadly we lost Chris recently. On the positive side, we are looking forward to strengthening the team with two new members. We now have the equipment and capacity to work at two sites concurrently. Apart from footpath clearing, we have repaired or replaced worn stiles, plank bridges, erected way marker posts and helped to maintain upkeep of our part of the Old Racecourse. Additionally, there are many rights-of-way issues to resolve, some of which result from lanes used by tradition, blockage of footpaths by landowners and new development.

Selattyn and Gobowen Parish

Annual Meeting of the Parish 2023 - Reports

Walkers are advised to report new footpath issues to Shropshire Council through their website forms. When urgent matters arise, the P3 team would often be able to fix the problem within its own resources. Although we leave bridge-building to the Shropshire professionals, we often work together on bigger projects. All of our volunteers are registered with, trained and insured by Shropshire Council Outdoors Department, who also provide the materials we work with. We are indebted to both Shropshire Council and Selattyn & Gobowen Parish for continuing to provide essential financial support for PPE and consumables. (Further information from Mike 07565 528821)

Parkinson's in the Marches

We held a Parkinson's Seminar at the Moreton School in Weston Rhyn. We had just over 100 attendees from all walks of life who need to find information, conversation and support.

We had speakers including a Parkinson's UK nurse, a neuro physio from Addenbrooks hospital, Charco neurotech with their CUE1 symptoms controller, a ballet teacher from Coleg Cambria, a solicitor advising on Power of Attorney & a Young Onset PD advisor as well

Lunch was provided & although so much effort, fundraising & organising went into the day, it was, according to amazing feedback, a resounding success.

Please get in touch if you are interested in being kept informed of future events.

Contact details: parkinsonsinthemarches@gmail.com 07984 596797

THE ST MARY'S CHURCH, SELATTYN – BURIAL GROUND.

HISTORY. This cemetery located below the main church grounds , walled and with a separate laneside entrance. It was gifted to the village by the 2nd Lord Harlech in the 1890s, and latterly transferred to Trustees. It is now a closed cemetery ie no more burials, though occasionally families reuse a grave area for another burial. Over the years plaques are also added. These provide very irregular financial help. Some 600 burials are recorded here (the official book is held by Shropshire County archives) . A plan of the graves is now available.

ADMINISTRATION. Three Trustees look after the care of the cemetery, organizing such work that is necessary, so that it is an asset and memory for the village. Tidy , but a little bit wild !

GRANT AID. This year the PC grant aided the work on the cemetery--£500. This is most welcome and allows the Trustees to keep this lovely quiet place in reasonable order.

Selattyn and Gobowen Parish

Annual Meeting of the Parish 2023 - Reports

ANNUAL WORK. The money will be used to employ a contractor to do about 10 mowing and tidy up sessions , over the summer. The village has recently undertaken annual maintenance. Occasionally other work is necessary, such as wall repairs that were partly paid for by a Charity. Other charity work/funding has been unsuccessfully tried.

FINANCES. There is no regular income, and we have annual costs of some £700, including the essential 3rd party insurance cover. Our current bank balance barely covers this requirement, and leaves little for emergencies.

SUMMARY.

This is not sustainable and will continue to be an annual problem, and why the Trustees appreciate this timely cash support from the Parish Council.

BRYN Y CASTELL COPPICE CONSERVATION GROUP

The Coppice, which lies at the back of Gobowen Playing Fields, takes its name from Bryn y Castell, the ancient mound lying behind Preeshenlle Church off St Martins Road. Responsibility for the few acres of Coppice, lies with both Shropshire Council and Selattyn & Gobowen Parish Council. The Conservation Group, formed in 2010, continues to keep a watchful eye on this Open Space on behalf of the Councils and residents.

The Coppice very much looks after itself as one of very few natural wetlands in Shropshire. The Group aims to support and encourage animal life and Nature to flourish. Thus, work is done to maintain and improve, without interfering in the natural process while enhancing accessibility. Walkers will note that path clearing, litter picking, trimming of unsafe growths and occasionally tree felling are routinely carried out. With the help of local Explorer Scouts, installing bird and bat nesting boxes and more recently coppicing small trees, the Group of volunteers has been able meet its aims for the benefit of the Community.

The past year has seen an unusual and erratic pattern of weather with very heavy rain, frequently strong winds and periods of high temperature. However, unlike in previous years, the Coppice has not dried-out. Flood waters of the River Perry have contributed to keeping lower-lying areas under water. The Coppice remains an interesting space with a great variety of plant and animal life, which are ripe for survey and study. New volunteers could play their part in keeping this underrated open space as a local gem. Contact Mike 07565 528821

Selattyn and Gobowen Parish

Annual Meeting of the Parish 2023 - Reports

2022 Annual Parish Meeting report

The 2022 Annual Parish Meeting was the launch of a parish-wide consultation; the first step in developing a 5–10 year strategic plan for the Parish. Nine themes had been identified for the consultation:

- Green Issues
- Community Facilities
- Youth Council
- Local Heritage Trail
- Transport Issues
- Community Services
- Green Spaces
- Neighbourhood Plan
- Community Safety

Residents had the opportunity to have put forward their views at two consultation events held in May 2022, through a survey shared online on the Parish Council's website and social media, or through a questionnaire printed in the August 2022 and November 2022 editions of the Parish roundabout and delivered to over 1800 homes in the parish.

52 people shared their views, either at one of the events or through the online or printed survey. There was a broad range of ideas and comments put forward across the 9 themes. The next pages detail some of the things that have been done as a result of your feedback.

The things that a Parish Council can do are limited by legislation so some of the ideas and comments put forward were, unfortunately, not within the power of the Parish Council to progress or resolve. Where appropriate, these issues were forwarded to other organisations that could deal with them.

Selattyn and Gobowen Parish

Annual Meeting of the Parish 2023 - Reports

Completed

You said	We did
Play equipment on Gobowen playing field needed attention	Repaired the zip wire Replaced the missing cradle swing seat
Christmas lights	Provided grant funding towards Christmas trees in Selattyn and Gobowen.
CCTV to reduce anti-social behaviour	New Pan-Tilt-zoom camera installed to cover Pavilion car park and playing field.
Speeding is an issue across the parish	Highlighted speeding as a key community concern on the local policing charter with West Mercia police. Obtained funding for vehicle activated speed signs for the parish (we are now awaiting Shropshire Council to work with us to purchase the speed signs).
Safe cycle and walking routes	Parish Council involvement in the consultation and feedback for Shropshire Council's Local Cycling and Walking Infrastructure plan (LCWIP) that took place ins 2022/23.
Littering / dog fouling	4 new bins installed – Preeshenlle Lane, St Martins Rd / Rhewl Lane, Railway carriage, Disley Close. Litter bin agreed for Upper Hengoed – will be installed when a suitable location can be identified.

In progress

You said	We are doing
Community litter picking facilities	Installing an external storage unit at the Pavilion for litter picking equipment for use by the community
Pavilion building in need of redecoration	Putting in new ceilings and lighting in the changing room; replacing radiators.
Many ideas for better use of the Pavilion – community hub, café, etc.	Setting up a working group discuss ideas for ways to use the building and improving the facilities.
More activities for young people	£1000 included in the 2023/24 budget for Youth programme development.

Selattyn and Gobowen Parish

Annual Parish Meeting 2023 - Reports

What's next?

The development process for the Council's strategic plan is continuing but we aren't standing still.

These are some of the projects that we are actively working on, either as a result of the consultation or in response to correspondence from Parishioners.

- Festive lighting
- Provision for a Christmas tree in Gobowen village
- Avenue of trees between Gobowen and Moors Bank
- Adult gym equipment for the playing field
- New bus shelter on St Martins Road to replace existing bus stop

There are other projects that have been put forward to the Council that would require major investment or the support and involvement of Parishioners to ensure their success. We welcome your ideas and comments about these projects and would also like to know if you would like to get involved with any of the projects.

- Neighbourhood Plan
- Youth Council and youth activities
- Pavilion redevelopment
- Management of green spaces (e.g. Wat's Meadow green space)
- Allotments in other areas of the parish